

A FOCA Lunch 'n Learn webinar:

FireSmart Tips for the 2024 Ontario Cottage Season

Increase your property's resilience to wildland fire



Wed. May 22, 2024

Welcome!

**We will begin
at noon**

Experiencing technical difficulties? Exit Zoom completely and re-enter using your link

Land Acknowledgement





Zoom Tech Overview

**Michelle
Lewin**

FOCA Manager of
Communications &
Development

Notes:

1. You are muted

> type questions for the speaker into the **Zoom “Chat”** box during the presentation

2. Slides & recording

will be shared in a post-event email later this week

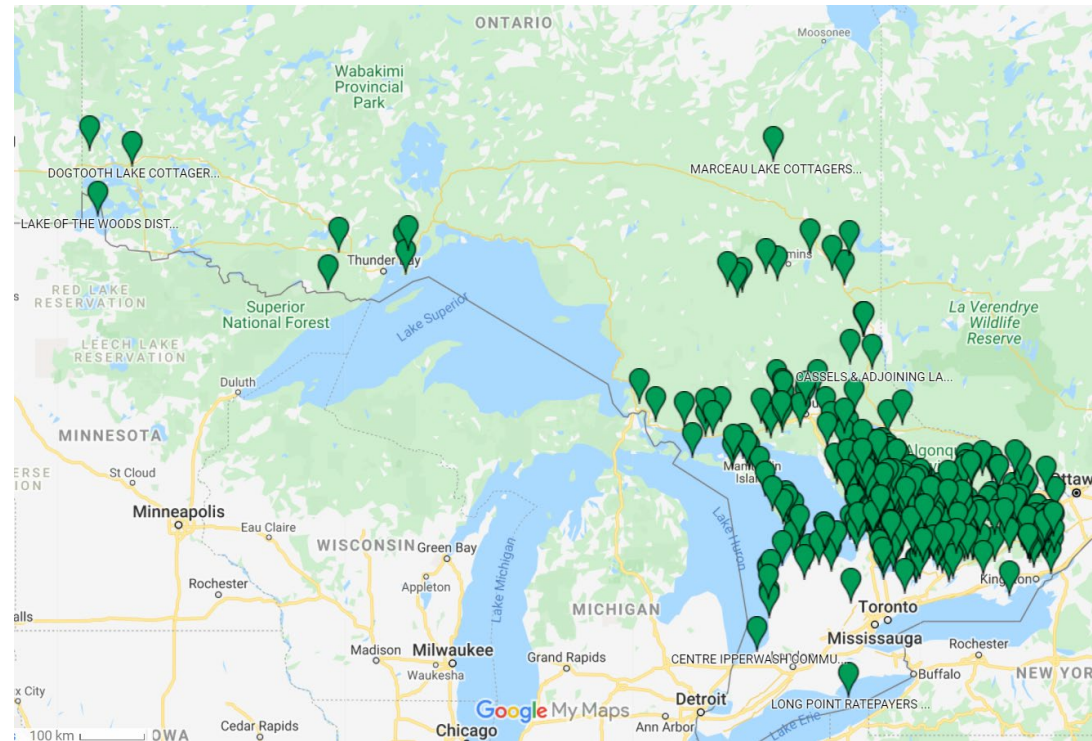
FOCA is: the Federation of Ontario Cottagers' Associations

60+ years

525+ associations

50,000+ families

**If you're in a
Member Association,
YOU are a
FOCA member!**



foca.on.ca/list-of-associations/

FOCA's Work on behalf of Waterfront Ontario



Promoting Healthy Lands,
Lakes and Rivers



Serving Lake and
Road Associations



Advocating for
Responsive Government



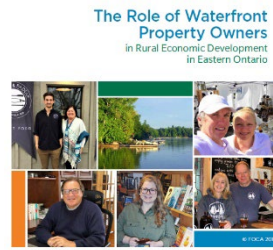
Championing Affordable
and Safe Rural Living



Building Organizational Capacity
& Strategic Partnerships



Fostering Community
in Rural Ontario



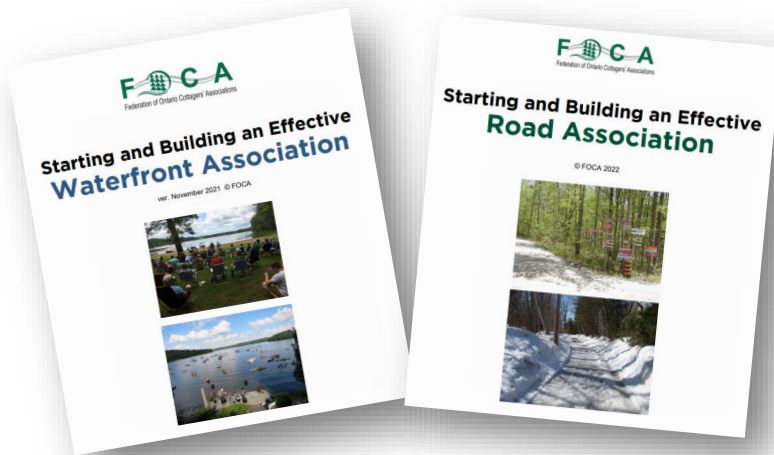
foca.on.ca/about/

FOCA Member Benefits include..

Key service offerings for
your **Association:**
foca.on.ca/association-bmps/

Plus, offers & discounts for
all your **Member families:**
foca.on.ca/benefits/

Cade Associates
Insurance Brokers Limited



Need your Member Web Login?

Email us: info@foca.on.ca

ROGERS™ Exclusive RPP Offers for
FOCA Members!

*Do your fellow members know about
all their FOCA member benefits?*

Attend FOCA Events:



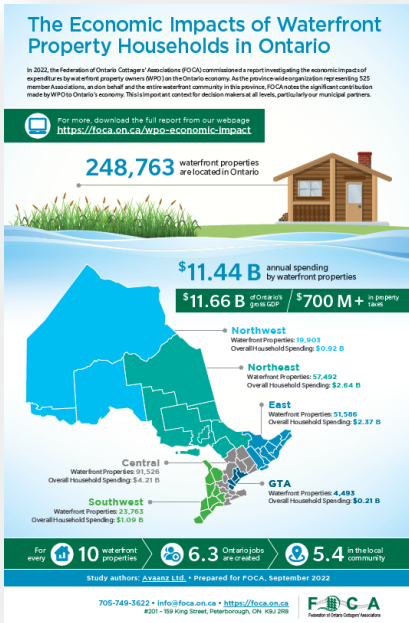
Cottage Succession A to Z
with estate lawyer Peter Lilloco



[foca.on.ca/
cottage-succession/](https://foca.on.ca/cottage-succession/)



foca.on.ca/events/



The Value of FOCA: Advocacy, Voice, Network

HOT TOPIC: Capital Gains Tax

foca.on.ca/

[property-taxation-assessment/](https://foca.on.ca/property-taxation-assessment/)

Latest News

On April 16, 2024, Finance Minister Chrystia Freeland tabled a 2024 federal budget including an announcement that the **capital gains tax** on amounts over \$250,000 will rise on or after June 25, 2024. This will negatively impact many FOCA members who sell or transfer ownership of their cottages to the next generation. FOCA has sent a letter to the government in opposition to this development. [Download FOCA's letter](#) (PDF, 1 page).

Your Role



WRITE YOUR M.P. – FOCA encourages you to [download a template letter](#) (Word document) that you can customize to [write to your own MP](#), explaining the negative impact of this development on your family. **PLEASE copy FOCA on your letter** (cc. communications@foca.on.ca), consider a **donation** below to support our work, and see **additional news** and related media coverage further down this webpage.

Ongoing Environmental Programs



foca.on.ca/carps/



foca.on.ca/isampleon/



foca.on.ca/phragmites/







[foca.on.ca/
lake-partner-program/](https://foca.on.ca/lake-partner-program/)

The Value of FOCA:

Advocacy, Communication, Education



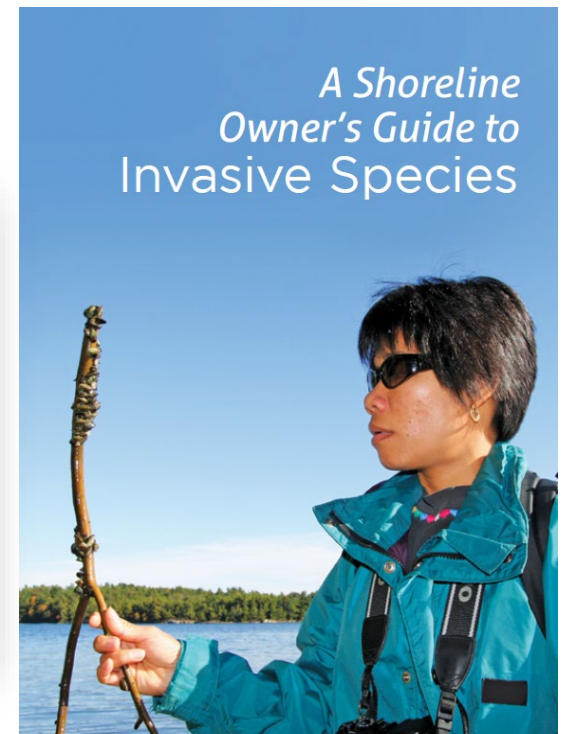
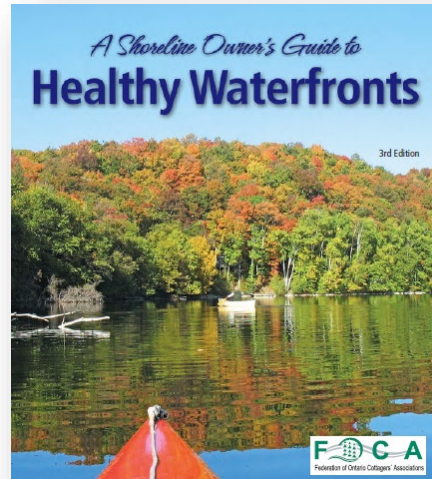
WHAT THE LAKE PARTNER PROGRAM MEASURES

| Total Phosphorus (TP) | Water clarity | Calcium (since 2008) | Chloride (since 2015) |
|---|---|--|---|
| <ul style="list-style-type: none"> Important nutrient controlling the growth of algae in Ontario Lakes  | <ul style="list-style-type: none"> Estimated using a Secchi Disk  | <ul style="list-style-type: none"> Essential element that is required by all living organisms  | <ul style="list-style-type: none"> There have been increases in chloride levels across the province due to road salt  |



Print & Video Publications

signs, brochures, reports...



In This Issue

- Celebrations & Congratulations.....2
- And the Awards Went to.....3
- Hot Topics & Emerging Issues.....4
- It's Fire Season!.....6
- Extend Your Experience at the New Canadian Canoe Museum.....9
- Ice On & Ice Off Data: Your Call-to-Action!.....10
- Generator Safety: Powering Your Cottage Safely.....12
- Finding & Engaging Members & Volunteers.....14
- Support FOCA.....16
- A "Menu" of Engagement Activities for Lake Associations.....18
- Road Association Liability Q&A.....20
- Simple, Cost-Effective Tips to Create Flood and Wildfire-Ready Properties.....23
- Lake Partner Program - The Volunteers Speak.....24
- Understanding Blue-Green Algae Blooms.....26
- Stop Starry Stonewort Project: Minnesota's Containment Strategy.....28
- Wood Ash & Sugar Maple Sap.....30
- FOCA 60th Anniversary Celebration.....32



FOCA Cottage Country Septic System Video



foca.on.ca/

[publications-videos/](https://foca.on.ca/publications-videos/)

Resources

for those who are new to the waterfront (or just spending more time there)

Welcome to Cottage Country! – from FOCA

You likely came here for the same reasons we do: to escape the hustle & bustle of urban life, and enjoy the great outdoors. You're in the right place. We have fresh air, clean and safe lakes, abundant wildlife, starry skies, and so much more. **Here's how we all keep it that way, and why it matters.** We hope we can count on you to help us!

Enjoy your time in cottage country. Be aware that pets, excessive noise, and lights can interfere with relaxation or star gazing, or neighbouring kids' bedtimes.

Septic systems are kept in good working order by limiting water use and keeping chemicals and non-degradable items out. Overloading your cottage (and your septic system) with guests can wreck the balance.

Garbage and recycling in cottage country is not usually picked up at "curbside" but needs to be dropped off at one of the local landfills. Don't leave your mess for others to clean up.

Phosphate free products are needed for washing and cleaning. Also, we never wash in the lake. Don't drink untreated lake water!

Food is not left outside overnight and **BBQ's** are cleaned after use, so animals are not attracted to the leftovers.

Boats used in other lakes or rivers are cleaned, drained and dried before launching in our lake. Bait buckets and live bait are never emptied into the lake.

Campfires are enjoyed safely. The status of the Forest Fire danger is posted on area roads

Remember that **noise** travels further on the lake than you think! We all unwind in different ways, so let's all respect that, and find ways to share this beautiful place.

Letting the system break biodegradable waste down without overloading it limits the possibility of harmful bacteria, phosphorous, and nitrogen entering the lake from septic system failure (smelly, harmful and expensive).

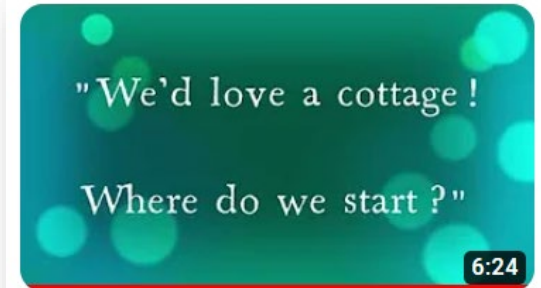
Garbage left overnight can be attacked by animals. **Bears** will return to the same spot where they found "food" for up to 5 years!

Phosphates and other harmful chemicals make their way into the lake promoting excess plant and **algae** growth.

Wildlife and cottagers live together safely when they respect each other's boundaries. Only view wildlife from a safe distance. Don't let dogs roam.

Why? **Invasive species** such as zebra mussels can enter the lake, causing disease and damage to native species. Don't be the reason for spreading invasives!

The closest fire station is so far away that a spreading fire poses danger to everyone. Never

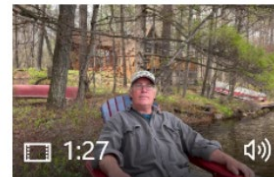


Welcome to Cottage Country! Thinking about buying a cottage? Start here.

2.1K views • 2 years ago

foca.on.ca/cottage/

Video resources:

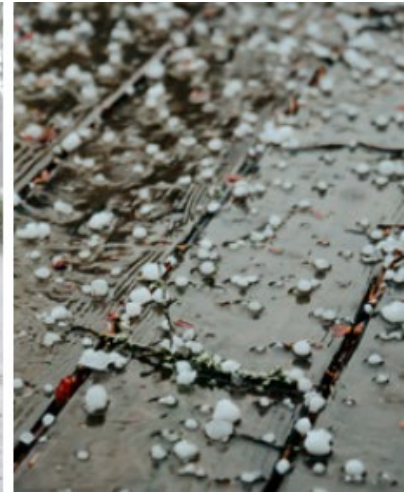


New to cottage country, or thinking about buying a cottage? **Start here!**

[Watch this video](#) (online; 7 mins) for tips from FOCA about choosing an area, finding the perfect cottage or building

your own, learning about your property, and connecting with the local lake association.

Emergency Preparedness in Rural Areas



[foca.on.ca/
emergency-preparedness/](https://foca.on.ca/emergency-preparedness/)



FireSmart and Your Community

Shayne McCool – Fire Advisor Northeast Region
Aviation Forest Fire and Emergency Services
Ministry of Natural Resources and Forestry

FireSmart Strategy for Wildland Fire Protection

The FireSmart Focus is structural ignition prevention



We're aiming to prevent structures from burning, not to eliminate wildland fires.

**During his presentation,
Shayne played two videos;
here are the links to watch them:**

VIDEO: Ember Storm Test

<https://youtu.be/lvbNOPSYyss?si=hAkVVmVtUPBgMNFk>



VIDEO: Your Home Can Survive a Wildfire

https://youtu.be/vL_syp1ZScM?si=Qel6tP5LMFD11zHC



FireSmart Strategy for Wildland Fire Protection



GOOD NEWS!

A relatively small amount of fuel reduction in the ignition zone decreases structure ignitability.

Even in high intensity crown fires!

Wildland Urban Interface Research Science

- Research shows that:
 - 85 – 90% of homes without flammable roofs and 10 to 20m of clearance survive major wildfires.
 - Big flames are NOT the problem
 - It's the little things that ignite homes.
 - Embers account for over half of all home ignitions



Fuel Modified Areas

Fire drops from crowns to surface then hits fuel free area and slows.

Wind Direction



Fuel Treatment of Forest

Untreated Forest Area

HOME IGNITION ZONE

EXTENDED ZONE

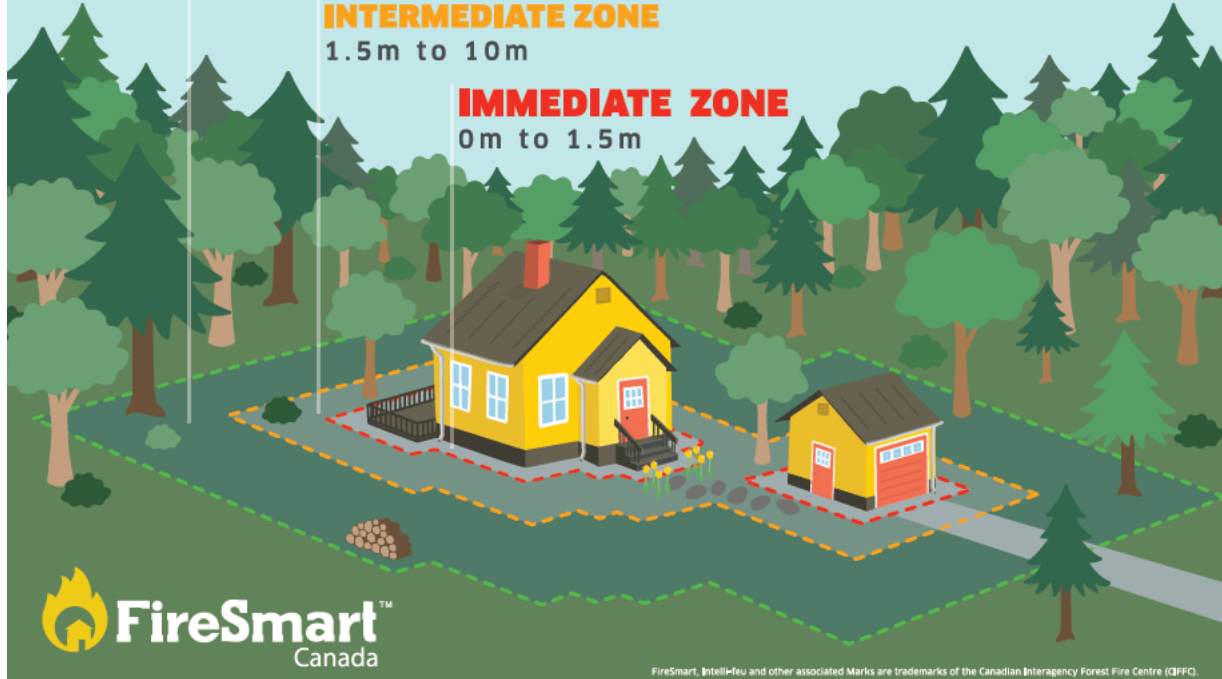
10m to 30m

INTERMEDIATE ZONE

1.5m to 10m

IMMEDIATE ZONE

0m to 1.5m



FireSmart, Intelli-Flu and other associated Marks are trademarks of the Canadian Interagency Forest Fire Centre (CIFFC).



Scan from Top to Bottom - What to Look For:

- Factor 1 - Roof Material:
 - Combustibility – rated or unrated
- Factor 2 - Roof Cleanliness:
 - Accumulated litter, moss and overhanging branches sustain ignition.
- Factor 3 - Eaves, Vents + Soffits:
 - Openings allow embers, heat, and flames to enter.
 - Vinyl soffits melt



Scan from Top to Bottom of the Structure:

- Factor 4 - Exterior Walls:
 - Combustibility varies, embers may lodge.
 - May melt and expose inner combustibles.
- Factor 5 - Balcony/Deck/Fence:
 - Flammability, where will embers accumulate.
 - If the deck ignites, so will the home
- Factor 6 - Windows and Doors:
 - Variable resistance to heat fracture/collapse.
 - Potential entry point for embers, radiant heat.

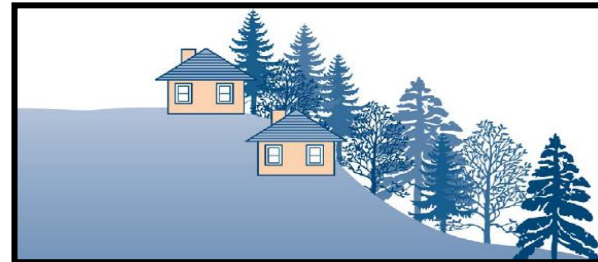


Scan Outwards from the Foundation:

- Factor 7 - Nearby Combustibles:
 - Firewood, window boxes, furniture, scrap lumber, fences
 - Generates embers + heat
 - Leads to home ignition



- Factor 8 – Setback from edge of slope:
 - Causes vulnerability to convective flame and embers rising from below
 - Flame length may exceed setback from crest



Scan Outwards: Vegetation (Fuel)

- ALL vegetation (ornamental + natural) in the Home Ignition Zone
- How is fire behavior and building exposure affected by:
 - Fuel Load (amount of fuel)
 - Fuel Size
 - Moisture characteristics
 - Fuel Continuity
 - Horizontal fire spread
 - Vertical fire spread (ladders)



Vegetation Management Strategies



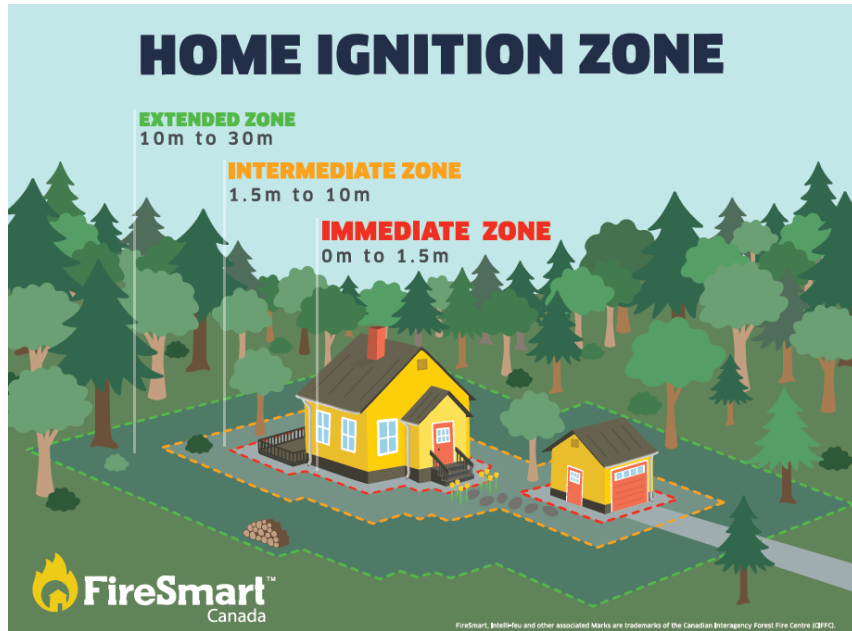
Before



After

1. Fuel removal
2. Fuel reduction
3. Fuel conversion

Vegetation Management Objective: Immediate Zone



- The Immediate Zone is a fuel free zone.
- Creates an environment that will not sustain a surface fire.
- No chance for direct flame contact; limit radiant heat.
- Fuel removal + conversion are the principal strategies.

FireSmart Landscaping Choices = Conversion

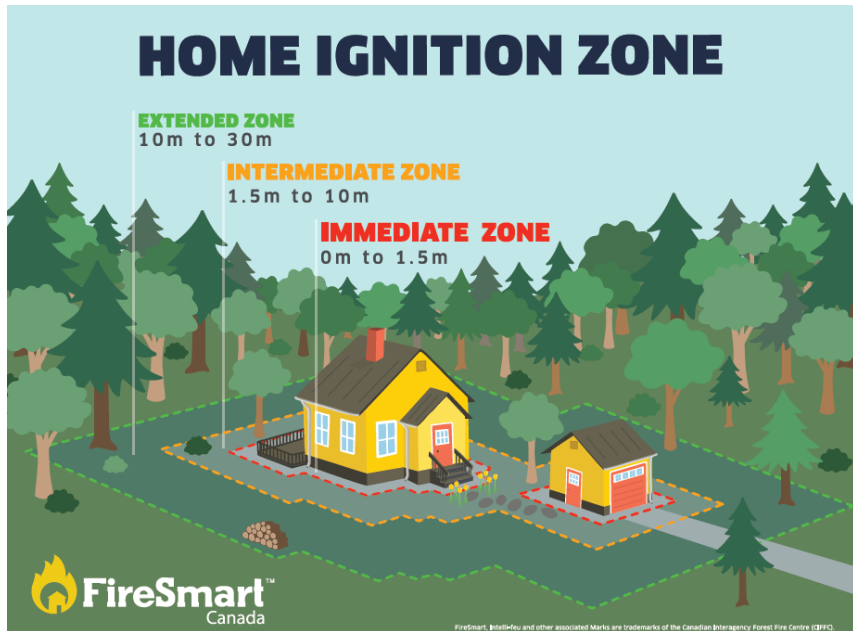
Choose Fire Resistance:

- ✓ Deciduous trees and shrubs
- ✓ Plants that:
 - retain water well.
 - have low fuel volume.
 - are short – low growing
 - succulent ground covers
 - non-resinous - less volatile
- ✓ Rock / gravel

Rather Than Flammability:

- ✗ Junipers, cedars, conifers
- ✗ Plants that:
 - are needle-bearing
 - dry out quickly
 - have prolific foliage
- ✗ Long, cured grasses
- ✗ Combustible bark mulch

Vegetation Management Objective: Intermediate Zone



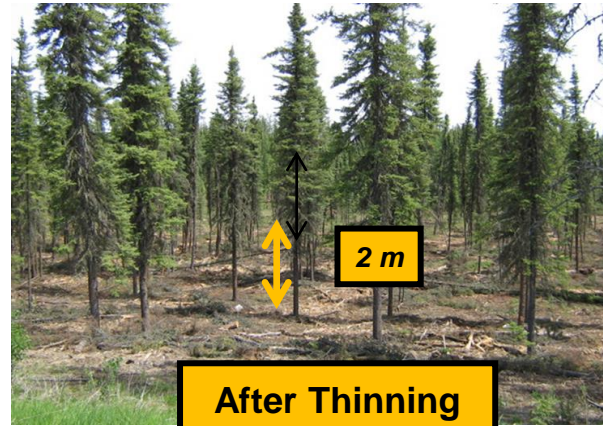
- Create an environment that only supports fire of lower intensity and rate of spread.
- Fuel reduction, removal and conversion are the principal strategies.

Vegetation Management: Extended Zone

- Create an environment that will reduce a wildland fire's intensity once it enters this zone
- Understory thinning to reduce laddering into mature canopy
- Prune conifers to 2 meters and space them 3m apart



Before Thinning



After Thinning

Maintaining FireSmart Vegetation in the Ignition Zone

- ✓ Keep trees pruned and spaced.
- ✓ Remove dead branches.
- ✓ Thin encroaching conifers.
- ✓ Periodically thin shrubs.
- ✓ Mow lawn regularly.
- ✓ Remove surface litter annually.



Conducting Assessments



There are no guarantees but:

- Effective Home Ignition Zone treatment dramatically increases home survival chances
- You are not helpless, simple mitigations can make a BIG difference!

WILDFIRE COMMUNITY PREPAREDNESS DAY

- \$500 Grant Available
- Application window from November 1 – January 31
- Host a FireSmart Event Between October and May
- Open to Anyone
- www.FireSmartcanada.ca



Local FireSmart Committee

- Recruit others from the neighbourhood/community which can include:
 - Homeowners and residents
 - Fire Professionals
 - Land Managers
 - Planners
 - Members of other interest groups



FireSmart Canada Education and Resources

- FireSmartCanada.ca
 - FireSmart 101
 - FireSmart Begins at Home Manual
 - FireSmart Guide to Landscaping
 - Neighbourhood Recognition Program
 - Home Ignition Zone Self Assessment and poster
 - FireSmart Last Minute Checklist
 - FireSmart Home Development Guide
 - Wildfire-resilience best-practice checklist for home construction
 - FireSmart Fact Sheets

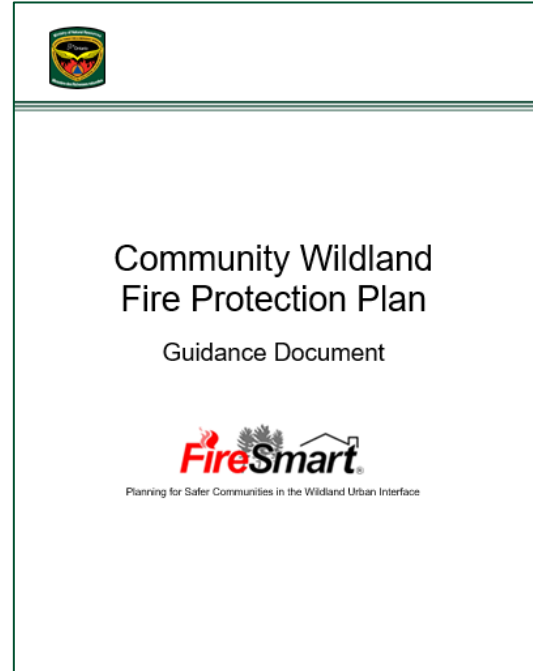


Community Wildland Fire Protection Plans (CWPP)

5-Step Planning Process

- 1) Identify Stakeholders
- 2) Describe the community
- 3) Infrastructure and Property Assessment
- 4) Wildland Fire Mitigation
- 5) Wildland Fire Response

This plan will also utilize support mapping and statistical products



Mapping and Statistical Products

- Fire history map at a 30km radius
- Fire history statistic, data includes:
 - Fire number
 - Fire year
 - Fire genre (Lightning, recreation, RWY etc.)
 - Fire start and out date
 - Final fire size
- Fire hazard classification map
- Satellite imagery
- Values map

Tips to Make Your Home and Property FireSmart

Download the FireSmart Begins at Home app and do a self-assessment of your home and property.

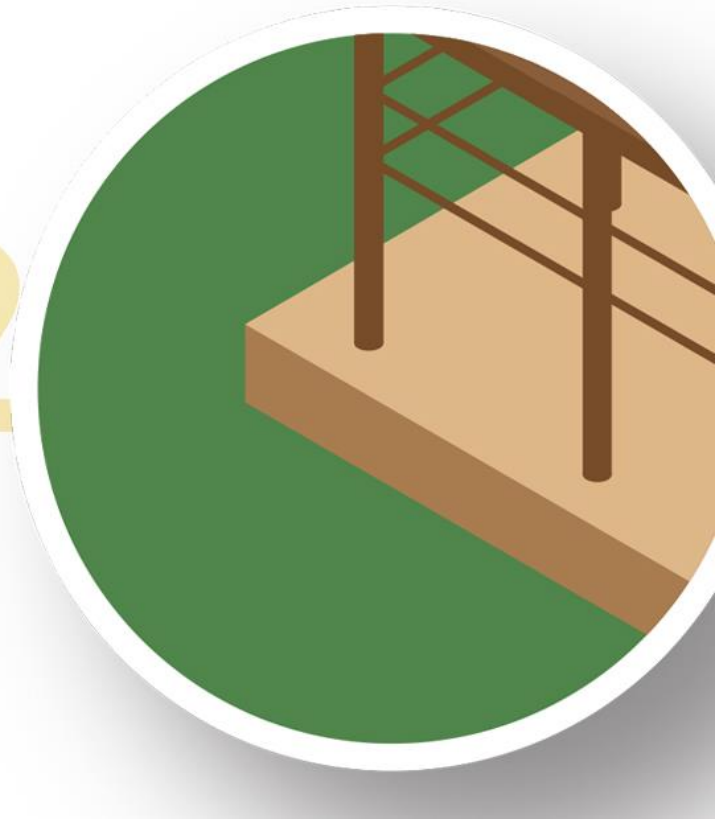
01



Tips to Make Your Home and Property FireSmart

Remove combustible material from under decks.
Keep a 1.5 metre non-combustible zone around the house and deck.

02



Tips to Make Your Home and Property FireSmart

Clean and maintain gutters and roofs. Keep decks and balconies clear of leaves and debris.

03



Tips to Make Your Home and Property FireSmart

Keep grass and weeds cut below 10 centimetres.

04



Tips to Make Your Home and Property FireSmart

Plant wildfire resistant vegetation to reduce flammability of your landscaping.

05



Tips to Make Your Home and Property FireSmart

**Add non-combustible
3 millimetre screens
to external vents
(except dryer vents)
to keep embers out.**

06



Tips to Make Your Home and Property FireSmart

Prune trees to create a two-meter clearance from the ground.

07



Tips to Make Your Home and Property FireSmart

Move firewood at least 10 meters away from your home.

08



Tips to Make Your Home and Property FireSmart

Hold sheds and other structures to the same standards as your home.



09



Tips to Make Your Home and Property FireSmart

Have a wildfire evacuation plan for your household.



10





Last-Minute Checklist for Protecting Your Home and Property from Wildfire



Evacuation Tips

Monitor conditions and follow the advice of local authorities. If ordered to evacuate, do so immediately.

Review your evacuation plan for your family and pets.

- Visit www.getprepared.gc.ca for helpful tips and evacuation plan templates.

Have your "ready to go kit" (emergency kit) ready and stocked with cash, portable radio, prescription medications, eye glasses, change of clothes, pet food, flashlights and batteries, etc. Make sure your phone numbers, insurance information and other important documents for your go bag are current.

- Visit www.getprepared.gc.ca for a more complete list of emergency supplies.

Before evacuating:

- Turn off air conditioning.
- Turn off your electricity and gas.
- Close all doors, garage doors and windows. If weather seal or doors have gaps, seal with duct tape.



Quickly address outside surroundings

Complete a scan around your home and property and take steps to remove combustibles.

Remove leaves, pine needles and other debris from your roof and gutters.

Mow grass and weeds within 10 metres of the house to 10 centimetres in length, or less.

Clear all dead plants, leaves, and weeds within 10 metres of your home. Maintain a 1.5 metre non-combustible zone around your home and deck by sweeping or raking down to mineral soil, rock or concrete.

Move combustible items, such as toys, patio furniture, cushions, decorative items, firewood, and potted plants, that are on and under your deck and within 10 metres of your home. Move all combustible items into your home or garage.

If you have a propane tank located on your property:

- Propane tanks should be moved to 10 metres away from structures.
- Remove weeds and other debris from area around large stationary propane tanks so there is no combustible material near tank.

If you have a combustible fence that attaches to your home:

- Secure gate in an open position.
- Clear vegetation and debris along both sides of combustible fence lines.



Check around the house

Check vents on roof, foundation and exterior walls to prevent embers from entering your home.

Check your attic and foundation (crawl space) vents to see if they are screened and in good repair. Use duct or metal tape to temporarily cover damaged vents and those with 3 millimetre mesh screening.

If you store cardboard boxes and other easily ignited materials near a vent in your attic or crawl space, move them as far away as possible from vent(s).

- Another option is to place tape over vent(s) at these locations. Be sure to remove tape when you return home.

Cover dryer vents and wall-mounted make-up air openings for furnaces with a plywood cover, metal tape or duct tape.



Visit www.firesmartcanada.ca for additional resources and information.

Questions?



Additional Resources:
<https://foca.on.ca/fire-safety/>

Register for our next webinar:

FOCA Cottage Succession – Tax Strategies



with estate lawyer

Peter Lillico

brought to you by

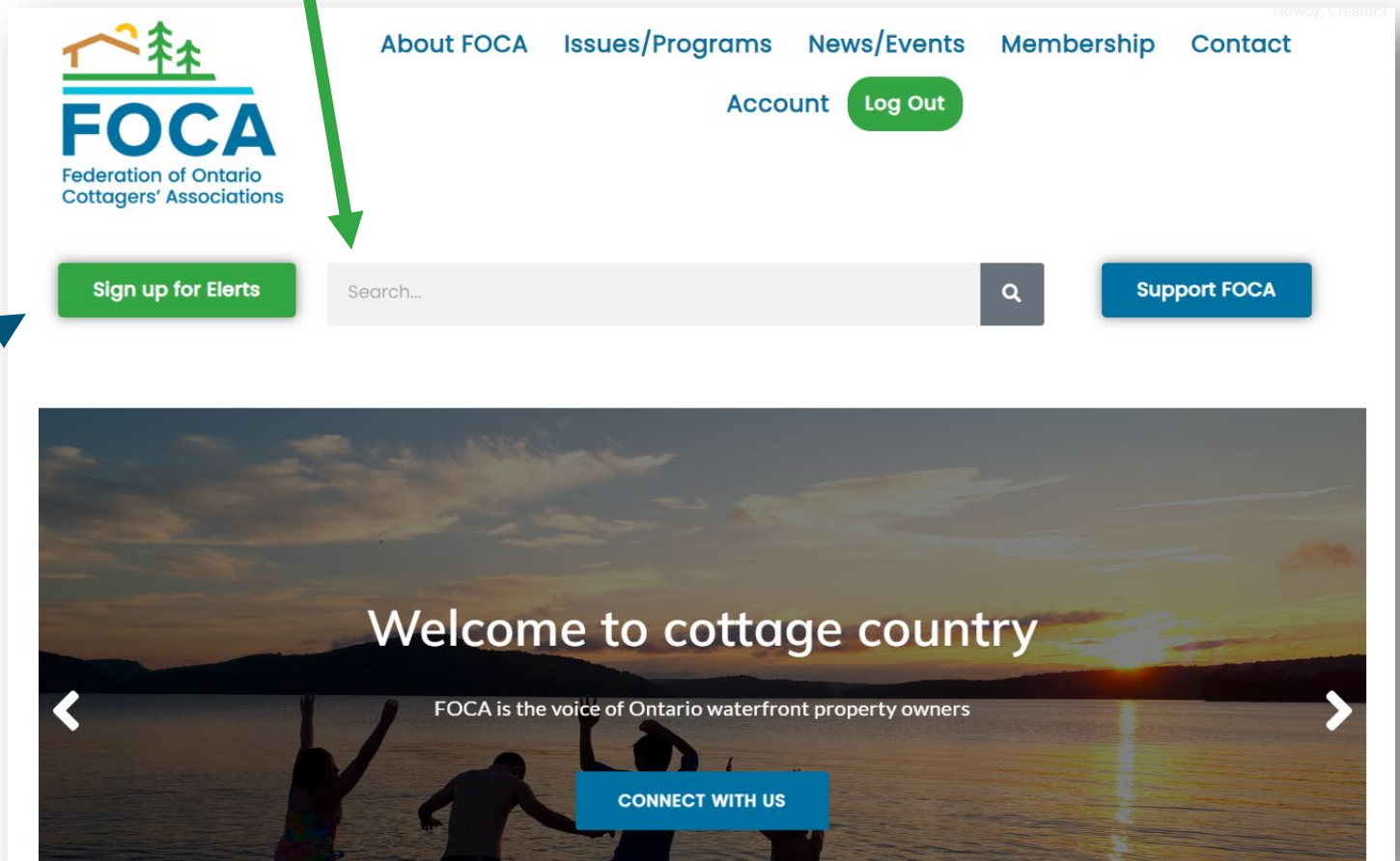


Wed. June 5, 2024

7:00pm – 8:30pm

[REGISTER HERE](#)

Got questions? Search here: foca.on.ca



While you're there, join over 20,000 FOCA Elerst subscribers!

For waterfront Ontario

Who Supports FOCA?

Cottage/Camp/Lake/Road Associations & individuals like you, who:

- ✓ Treasure family time in cottage country
- ✓ Care about clean and safe lakes
- ✓ Are concerned about affordability

By supporting FOCA, you help us in our work to protect thriving and sustainable waterfronts across Ontario. You also access many **benefits.**

Friend of FOCA



“**Friends of FOCA**” are our valued annual supporters.

Please share your extra support if you are able:

foca.on.ca/friend

As you exit...

You'll be taken to the Event Survey.

Later this week you'll receive an email with:

> a PDF copy of these slides & link to the recording



Thank you!